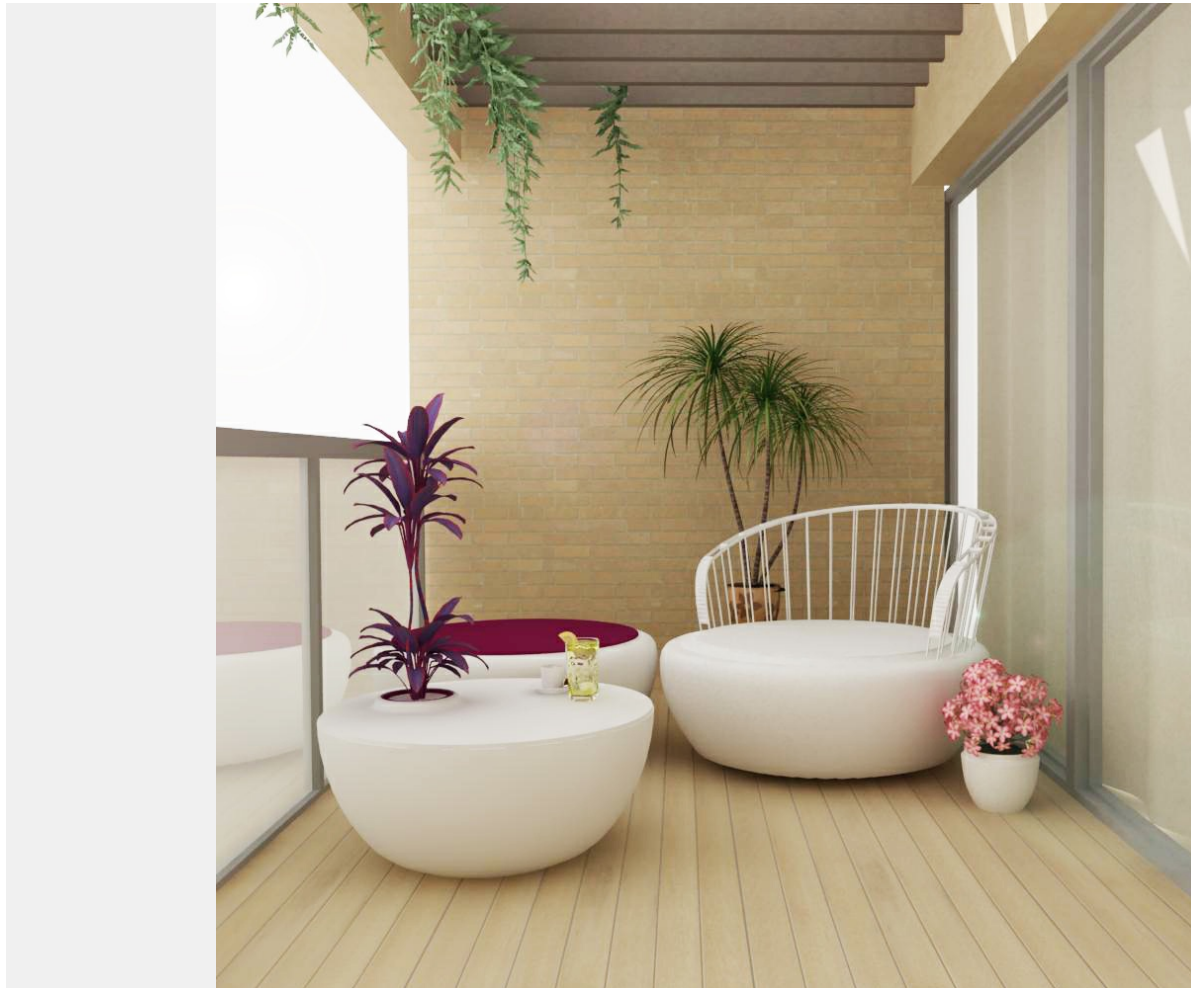


1/2 **Shade**

Flowerpot + table



Solution

TABLE could be made of natural, recyclable fiber cement. Fiber cement ingredients are: cement, powdered limestone, cellulose and synthetic fibers, water and air. Because fiber is combined with cement you get all the benefits of a durable concrete product without the weight..

CHAIR metal frames, resilient foam and a vinyl backed polyester laminate which is soft to the touch and also waterproof.

Status: 18.06.2018

Garden Goes Balcony

unique

2/2

Shade

Flowerpot + table

Creative's profile



anonimusarh PRO
Engineer

Creative's top 5 skills

Architecture, Graphic Design, Illustration, Product Design

ID: 12352. Last updated: 12.05.2011

jovoto

Status: 18.06.2018