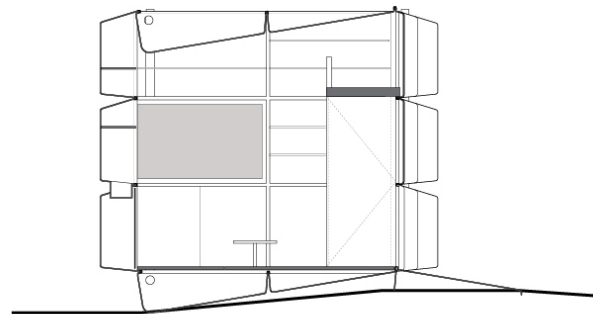


1/2 **NICE.CUBE**

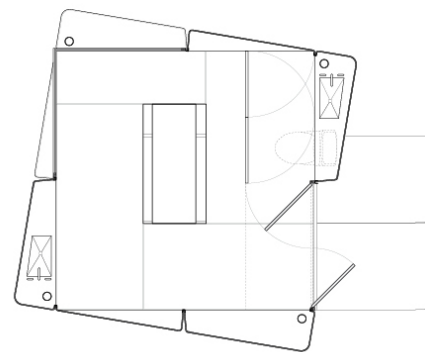
NICE.CUBE is a proposal for 3.5x3.5x3.5 meter composed wholly of identical, but malleable, molded 1x3 meter trays. Our thesis is the only a building system distilled in this way can house a single family.

NICE.CUBE
\$300 house
add life

PLAN/SEC



SECTION 1:100



PLAN 1:100

Solution

An investor asks,
What will \$300 yield?
An engineer asks,
How much will \$300 enclose?
An architect asks,
How many shapes can \$300 take?

Our proposal asks:
What is your increment of change?

Shelter is essential and a house is a defining asset, but for the very poor, any material advantage has got to allow for incremental acquisition, serve multiple ends, and enable a radical variety of unanticipated uses.

We scale into the challenge thus:

What \$20 invention would alter the landscape of both low-cost housing, and the means for attaining it?

While a basic dwelling can take many forms, there are structural, organizational and aggregational advantages to a rectangular

2/2

NICE.CUBE

NICE.CUBE is a proposal for 3.5x3.5x3.5 meter composed wholly of identical, but malleable, molded 1x3 meter trays. Our thesis is the only a building system distilled in this way can house a single family.

Creative's profile



ddd_llc **PRO**