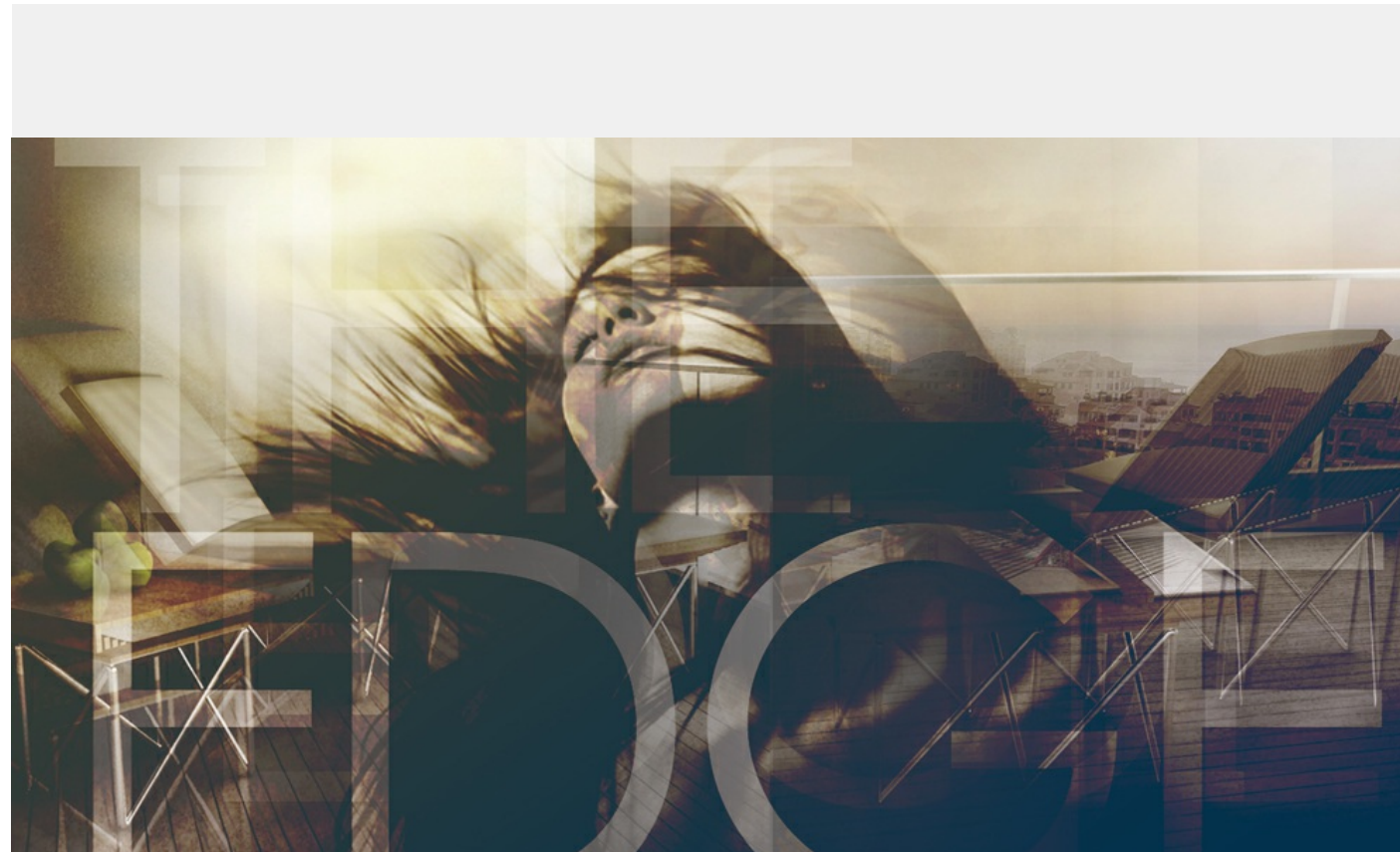


1/2 The Edge

The cliff is a perfect counterpart for the balcony. The painting Cliff Walk at Pourville by Claude Monet is just fitting to be a dream garden balcony template. Thus the concept adapted is translating that softscape quality of a landscape onto the balcony.



Solution

Inspired by a painting of a cliff, the balcony is an edge in its purest form; an infinite view, boundless and uncompromising.

The unbounded quality of a cliff adds to its grandiose character. And although it's not a part of the furnishings, this character is experienced in the balcony by the parallel stainless steel walls. In this way it creates an impression of a limitless horizon blurred and served upon its user.

The following are the characteristics translated onto the furnishings:

- GRASS. Its ephemeral and gauzy quality enhances the softness of a landscape. This is translated through the repeating spaced vertical

2/2

The Edge

The cliff is a perfect counterpart for the balcony. The painting Cliff Walk at Pourville by Claude Monet is just fitting to be a dream garden balcony template. Thus the concept adapted is translating that softscape quality of a landscape onto the balcony.

Creative's profile



nuhuh PRO
Designer

Creative's top 5 skills

Graphic Design, Product Design, Interior Design