

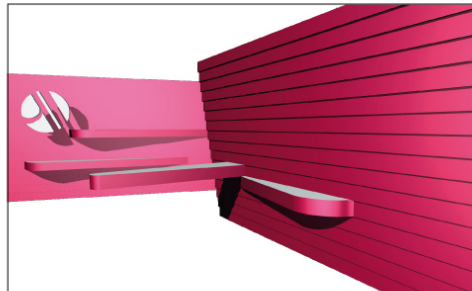
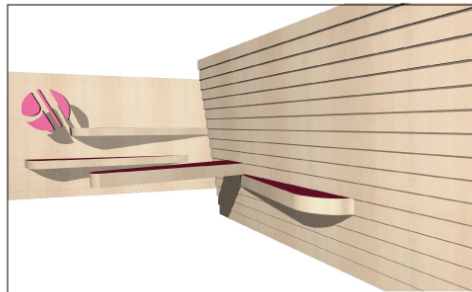
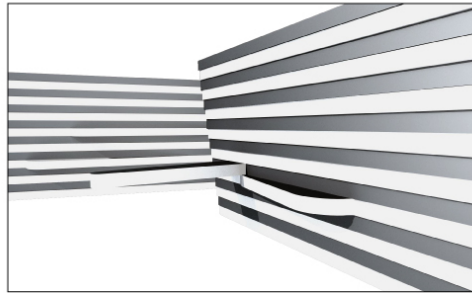
1/2 **Woven Space**

The Woven Wall: a unique spatial transition

MATERIAL

THE MATERIAL CAN BE CHANGED

- TO ADJUST THE RESTAURANT TO THE
SOURROUNDING, THE MATERIAL CAN BE
VARIED.



Solution

The Woven Wall project is a prototype framework for transitioning to a dynamic energetic space towards an interior that is at once solid yet fluid in the both divided and combined configuration and transitions between the two states. Using hinge points this internal ribbon flows freely in the dining area to spatially separate while also allowing flexibility for a dynamic array of states, positions and uses in the process of unfolding.

Facts:

150 PPL Front + 50 PPL Back
270 m2 + 70 m2 (Dining)

Status: 18.06.2018

Restaurant Transformer



2/2

Woven Space

The Woven Wall: a unique spatial transition

Creative's profile



Lecarolimited **PRO**

Creative's top 5 skills

Architecture