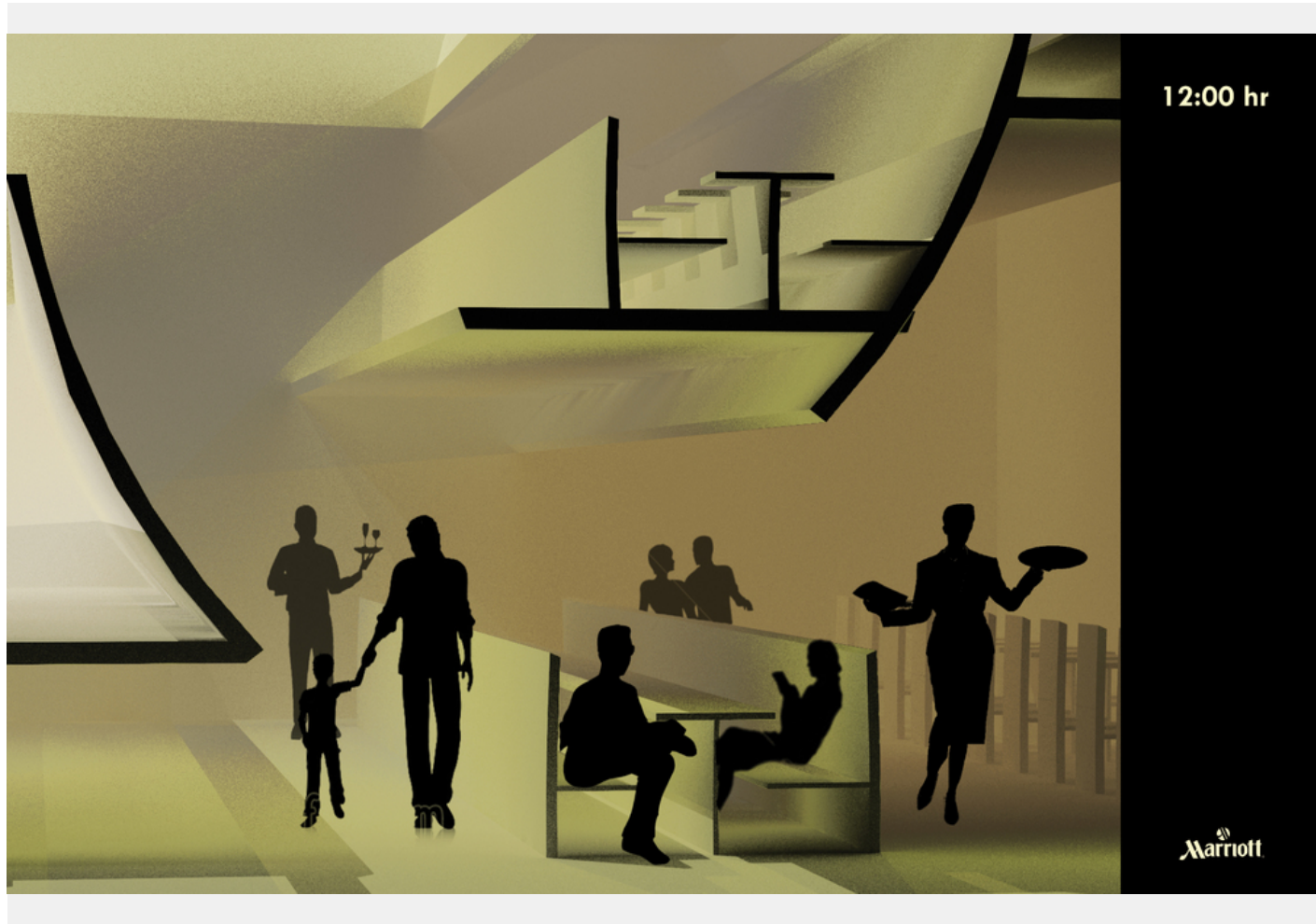


1/2 **De-curved**

Stop guessing.



**Solution**

Rather than design a space that physically transforms through moving partitions, dynamic projections and light shows, we're proposing an experientially dynamic (yet physically fixed) architectural intervention that can be occupied in varying ways throughout the day.

Rather than designing one space for different programs and uses at different times, we've designed one hybrid space to accommodate any number of programs at the same time.

The fact of the matter is that hotel patron expectations are increasingly difficult to accommodate. Some people start the morning quietly with a coffee and the paper. Others want to nurse a hangover by guzzling Screwdrivers and loudly recapping the events of the night before. Truth is, Marriott

has to cater to both of these morning people (and many other unique types too)

Restaurant Transformer



2/2

## De-curved

Stop guessing.

Creative's profile



**whitepiginkabul** PRO  
architect