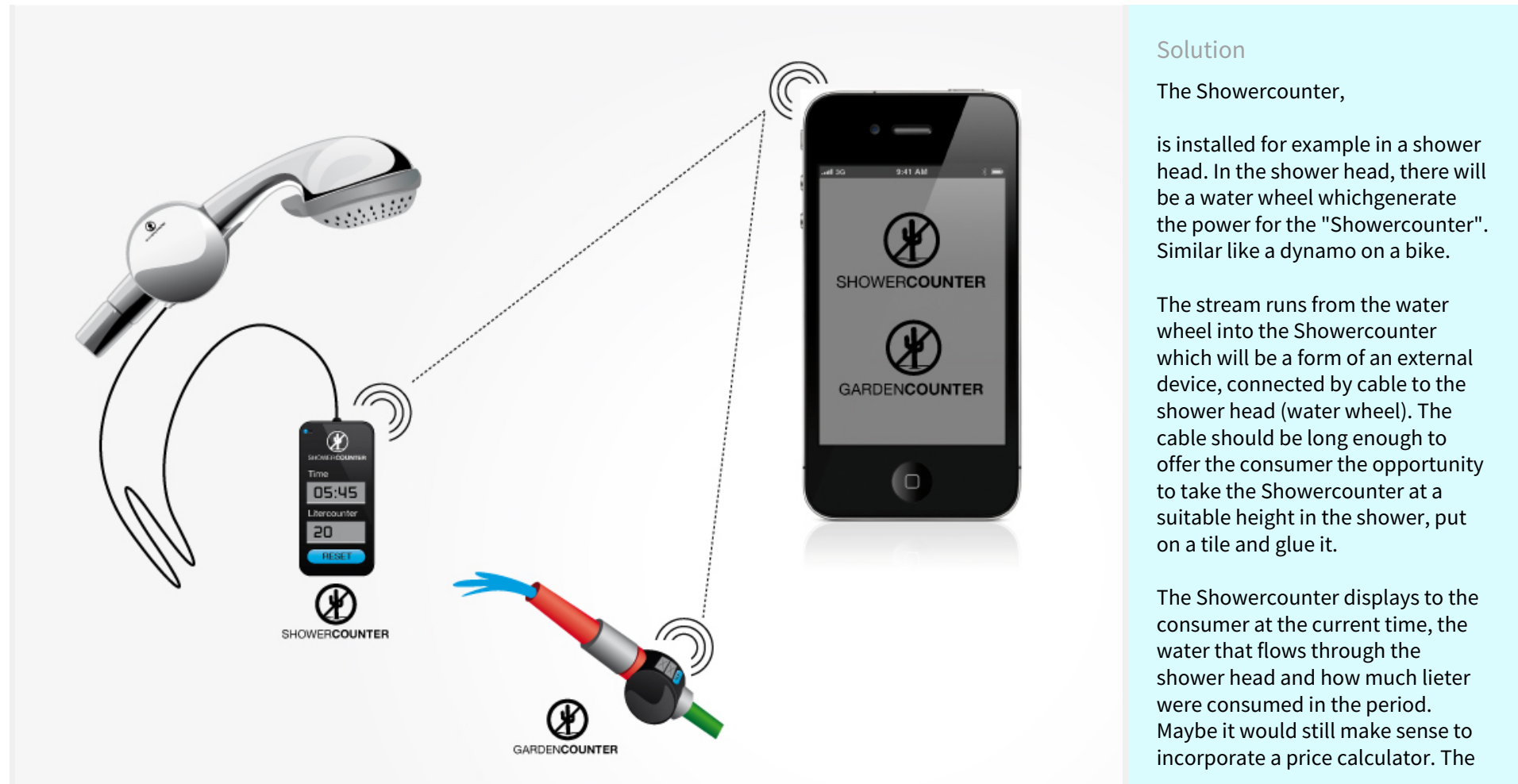


1/2 **Showercounter**

The Showercounter, operated by water power, and shows the consumer between consumption current.

**Solution**

The Showercounter,

is installed for example in a shower head. In the shower head, there will be a water wheel which generate the power for the "Showercounter". Similar like a dynamo on a bike.

The stream runs from the water wheel into the Showercounter which will be a form of an external device, connected by cable to the shower head (water wheel). The cable should be long enough to offer the consumer the opportunity to take the Showercounter at a suitable height in the shower, put on a tile and glue it.

The Showercounter displays to the consumer at the current time, the water that flows through the shower head and how much lieter were consumed in the period. Maybe it would still make sense to incorporate a price calculator. The consumer could then duration lieter consum and the cost for each shower will be displayed. The

2/2

## Showercounter

The Showercounter, operated by water power, and shows the consumer between consumption current.

Creative's profile



**Despire** **PRO**  
Mediendesigner digital und print

Creative's top 5 skills

Graphic Design, Illustration, Mobile Apps, Photography