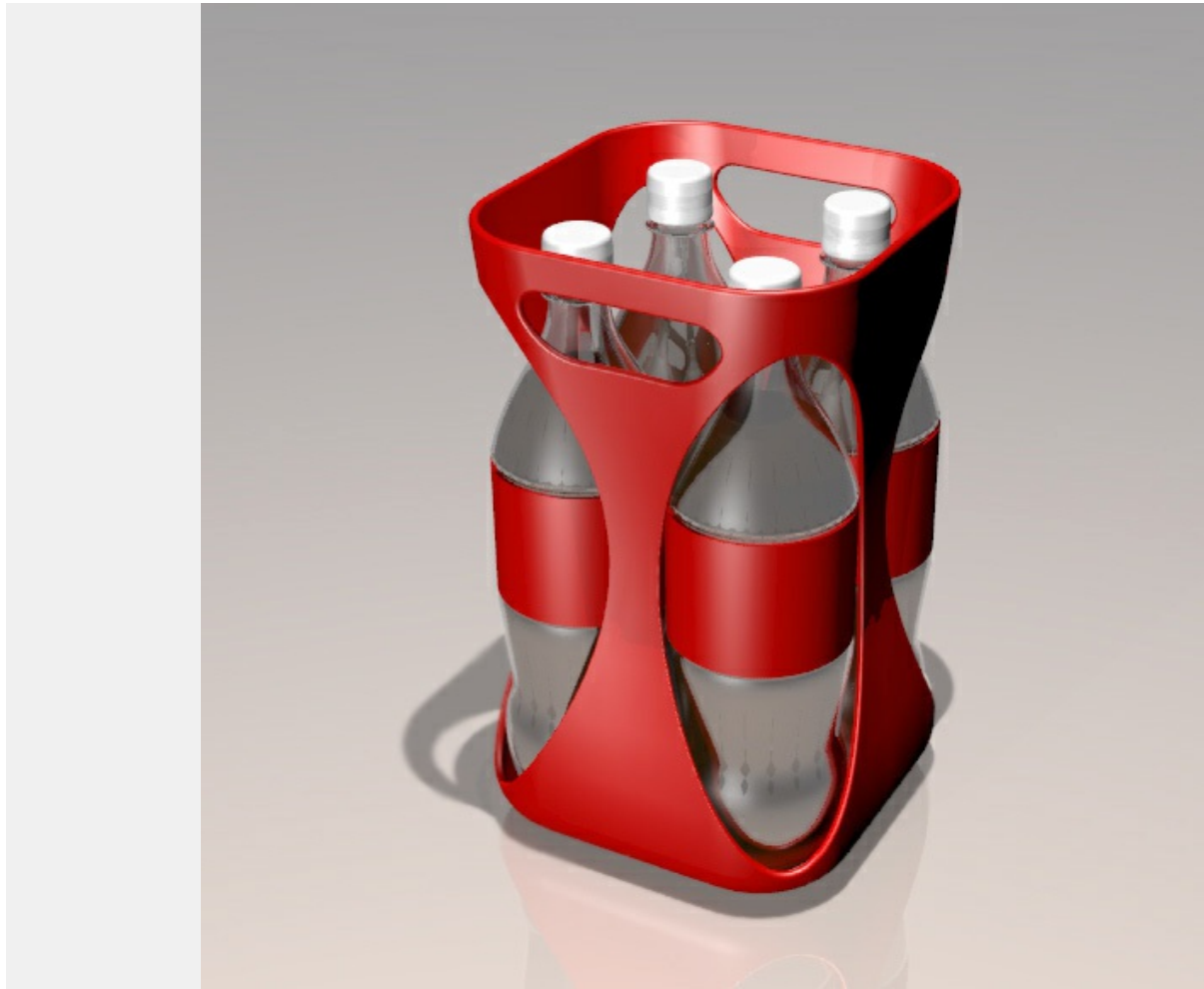


1/2 **simple**

simple and funtional



Solution

The design allows the bottles to be immovable and also to actually see completely the content of the crate.

The material should be like recycled polyethylene. Besides, the crate is that simple that doesnt require that much material.

The proposal could aslo be produced by rotomolding production process.

Status: 18.06.2018

2/2

simple

simple and funtional

Creative's profile



oxelot PRO
Designer

Creative's top 5 skills

Illustration, Photography, Product Design, Packaging Design,
Communication Concept

Status: 18.06.2018