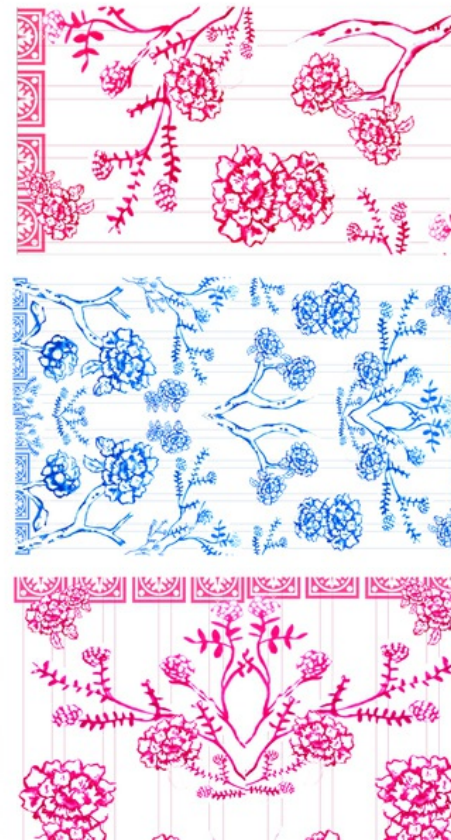


1/5 **Bone China Blues By Britt Laspina**

This Print was originally hand painted with blue hues, and is the perfect balance of French Chinese.

BRITT LASPINA
DESIGNS**Solution**

The Print was hand painted with shades and hues of porcelain blues. It is the perfect balance of French and Chinese Design, touching on porcelain ceramics such as Bone China, and Soft Vintage Delicate Fabrics, such as wallpapers and Antique Upholstery. While still remaining culturally authentic, it also has a modern feel with the sharp white background of the design.

2/5

Bone China Blues By Britt Laspina

This Print was originally hand painted with blue hues, and is the perfect balance of French Chinese.

Why does your design stand out?

This design stands out because it is easy on the eye while still being interesting, drawing the consumer in with its simplistic and elegant design.

3/5

Bone China Blues By Britt Laspina

This Print was originally hand painted with blue hues, and is the perfect balance of French Chinese.

Which kind of brands do you imagine using your design?

High End to Mid End. Starting from Diane Von Furstenberg through to Top Shop, Zara and H&M.

4/5

Bone China Blues By Britt Laspina

This Print was originally hand painted with blue hues, and is the perfect balance of French Chinese.

Is the design 100% created by you or is there anything we should know about any third party material used?

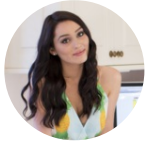
Yes of course! I hand painted each element to this design individually by hand and brought it together on Photoshop.

5/5

Bone China Blues By Britt Laspina

This Print was originally hand painted with blue hues, and is the perfect balance of French Chinese.

Creative's profile



Britt La
Print and Textile Designer
Brisbane, Australia

Creative's top 5 skills

Illustration, Textile Design