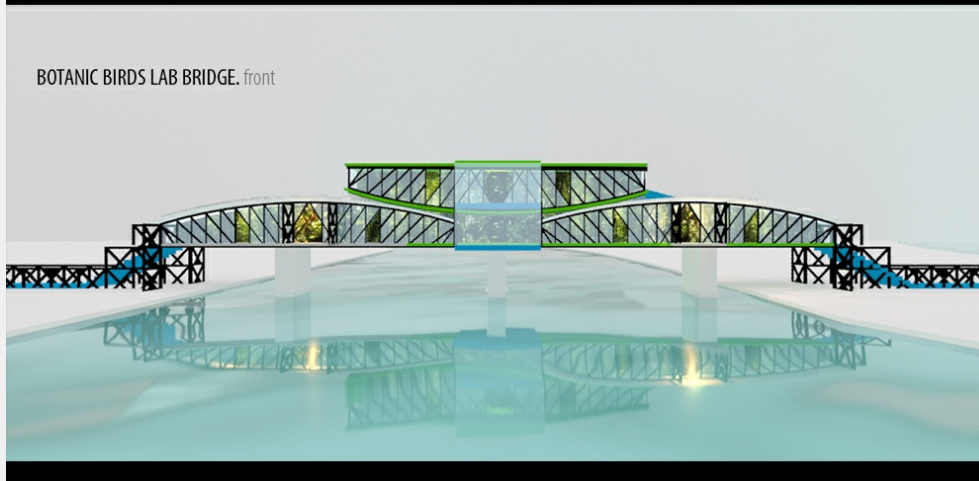
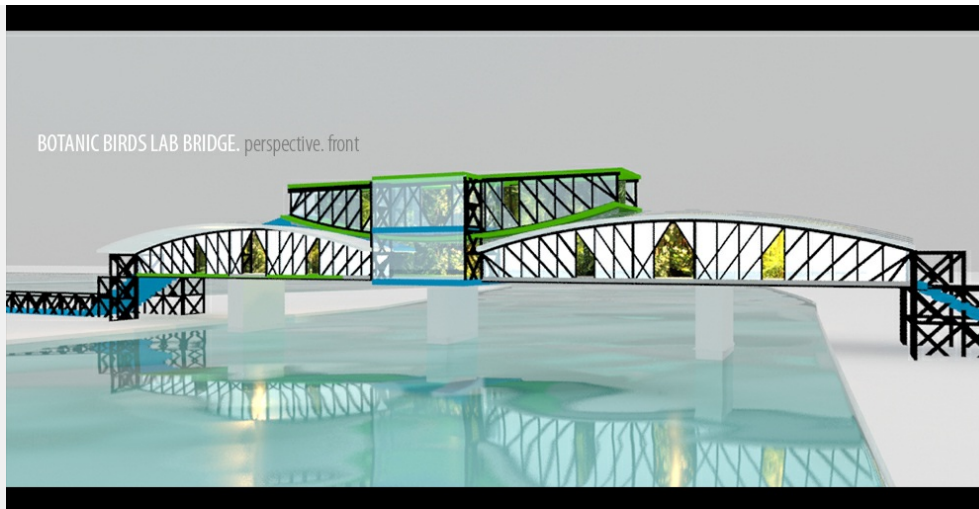


1/7 **BOTANIC BIRDS LAB BRIDGE**

It's an ECO Lab. Bring the nature back to Linz.



Solution

It's an eco Lab and Botanic garden with people, birds, butterflies, bees, flies and fishes in symbioses. It is important to keep the basic structure to preserve the history of the bridge and Linz. The bridge is a memory of the power of construction from the past. So what is the future evolution of Linz? Linz can have a green future, where the human and the nature can live in a balanced symbiose. Better be a good model, than a bad copy.

Status: 19.06.2018

Upcycle the Bridge

2/7

BOTANIC BIRDS LAB BRIDGE

It's an ECO Lab. Bring the nature back to Linz.

What is the name of your concept?

BOTANIC BIRDS LAB BRIDGE

3/7

BOTANIC BIRDS LAB BRIDGE

It's an ECO Lab. Bring the nature back to Linz.

Which of the three suggested areas are you choosing for your concept? (the Donaulände public park, the port area or the mouth of Traun River)?

Traun River - it is a good place for this kind of concept. It is in the near by is weiklersee, golfclub, wood, solar city, Traunwehr an der Stadtgrenze zwischen Linz / Ansfelden. It can be one puzzle piece of this region and city plan. The bridge is also a kind of optic fence for the harbor area on the side to dantube and it connects the two sides. This can be a new park area for the people of Linz.

4/7

BOTANIC BIRDS LAB BRIDGE

It's an ECO Lab. Bring the nature back to Linz.

What is the public function of your concept?

The functions is to relax, connect people, respect the nature, make science and sense. It will be connect the public with the nature. Bring the nature back to Linz. The nature is a neighbor, who the public forgot. A public should be have a bridge to their neighbors. When a city becomes more and more to a desert of concrete, the city will lost their quality of life. So this is a chance to save the quality of Life from Linz. Better be a good model, than a bad copy.

5/7

BOTANIC BIRDS LAB BRIDGE

It's an ECO Lab. Bring the nature back to Linz.

How are the parts of the old railway bridge visible in your concept?

All steel elements will be used and will be visible the old structure of the bridge. The new elements will be glass, wood and cement. It is important to get the basic structure to preserve the history of the bridge and Linz. The bridge is a memory of the power of construction from the past. It mixes the past with the future of Linz.

Upcycle the Bridge

6/7

BOTANIC BIRDS LAB BRIDGE

It's an ECO Lab. Bring the nature back to Linz.

Have you used any third-party material? Even if you've modified it, source the original here. See FAQ for details.

no

Upcycle the Bridge

7/7

BOTANIC BIRDS LAB BRIDGE

It's an ECO Lab. Bring the nature back to Linz.

Creative's profile



youdo **PRO**

Designer, Developer, Programmer Artist

Creative's top 5 skills

Mobile Apps, Product Design