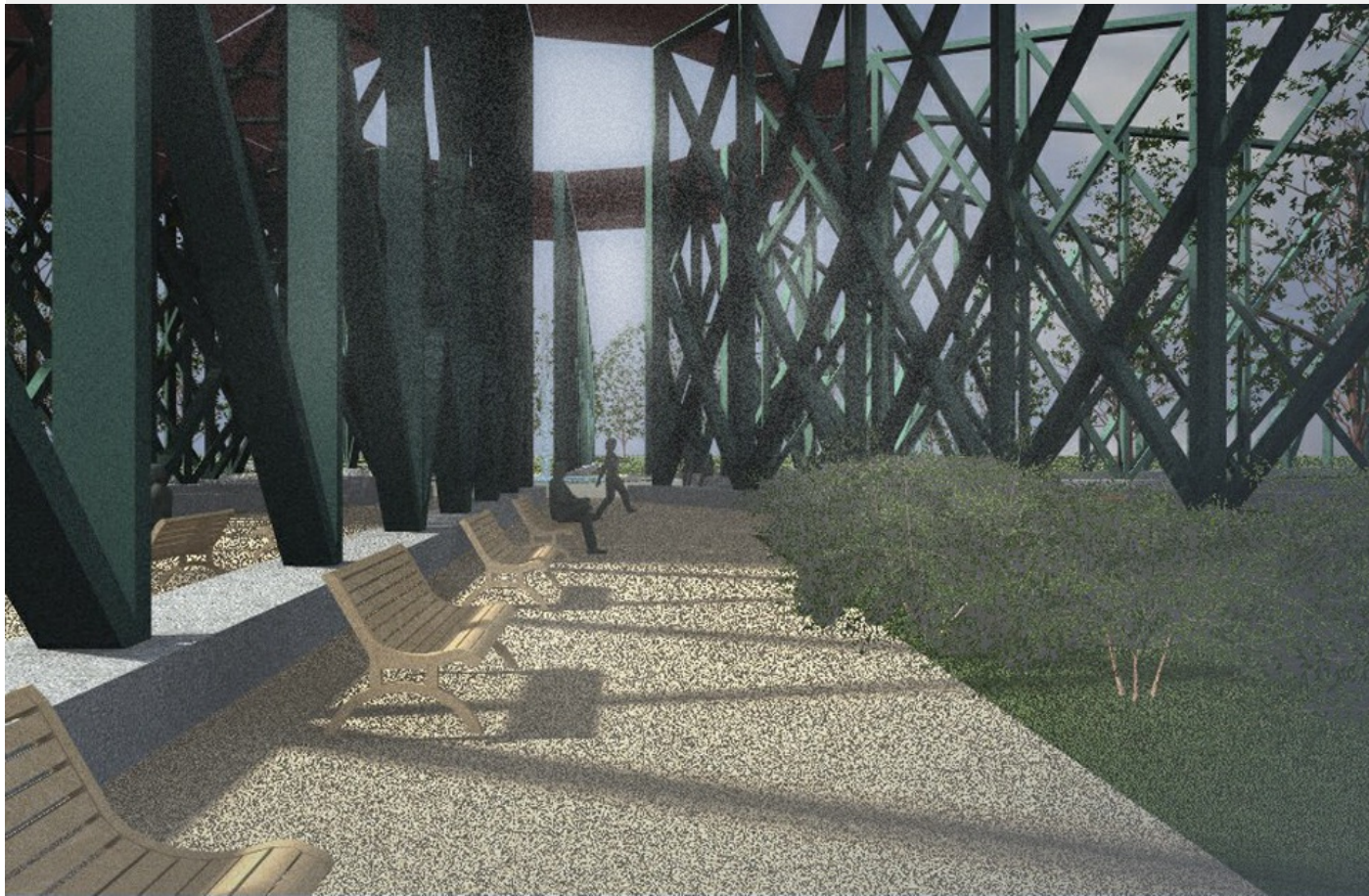


1/7 **Spiral Pavilion**

A pavilion in the park with twelve environments. The fountain will help to mask the freeway noise.



Solution

This park currently suffers from lack of definition. The goal of this pavilion is to define various areas that can be used for different functions: from a wedding reception to simply communing with nature. The original bridge trusses are split in the middle and arranged around a fountain. The fountain and the conch shell shape recall the original connection with the water. Canvas is stretched between trusses to provide shade. Some areas are turf and some areas are decomposed granite.

Status: 19.06.2018

Upcycle the Bridge

2/7

Spiral Pavilion

A pavilion in the park with twelve environments. The fountain will help to mask the freeway noise.

What is the name of your concept?

Spiral Pavilion

Upcycle the Bridge

3/7

Spiral Pavilion

A pavilion in the park with twelve environments. The fountain will help to mask the freeway noise.

Which of the three suggested areas are you choosing for your concept? (the Donaulände public park, the port area or the mouth of Traun River)?

Donaulände Park

4/7

Spiral Pavilion

A pavilion in the park with twelve environments. The fountain will help to mask the freeway noise.

What is the public function of your concept?

Any use that is normally done in a park. The environment is enriched and enlivened by the insertion of the truss elements and the fountain. Some areas focus on landscaping and plant materials, some areas are geared more to walking, sitting, skateboarding and recreation. The trusses will be used in their original form: they have been simplified for the sake of the renderings. The spokes focus your attention to the center, but they also make a connection outward to the various parts of the city.

5/7

Spiral Pavilion

A pavilion in the park with twelve environments. The fountain will help to mask the freeway noise.

How are the parts of the old railway bridge visible in your concept?

The bow trusses are split at the center and arranged around a fountain. They are cantilevered out of low concrete walls that double as seats.

Upcycle the Bridge

6/7

Spiral Pavilion

A pavilion in the park with twelve environments. The fountain will help to mask the freeway noise.

Have you used any third-party material? Even if you've modified it, source the original here. See FAQ for details.

No

Upcycle the Bridge

7/7

Spiral Pavilion

A pavilion in the park with twelve environments. The fountain will help to mask the freeway noise.

Creative's profile



Steve Pribyl
Architect

Los Angeles, United States

Creative's top 5 skills

Architecture, Graphic Design