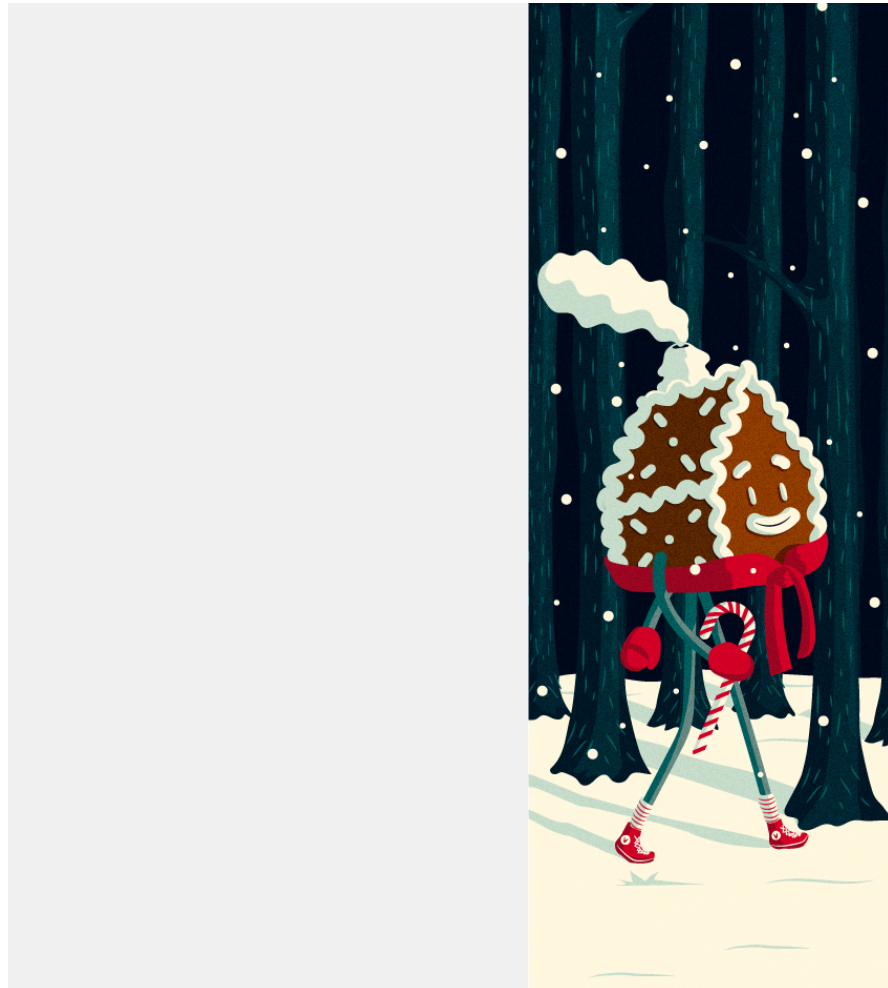


1/6 **Gingerbread House**



Solution

The Walking Gingerbread House

Status: 19.06.2018

2/6 **Gingerbread House**

What is the story behind your design?

The Walking Gingerbread House

3/6 **Gingerbread House**

Is there a connection between your design and the Victorinox brand?

No.

4/6

Gingerbread House

Please make sure you have filled out your country of origin in your profile! It's important that the regional Victorinox team understands the cultural background of your design.

Germany

5/6 **Gingerbread House**

Have you used any third-party material? Even if you've modified or combined it, please know that in this project no stock is accepted. See "mandatory requirements" (in the Brief) for details.

No.

6/6

Gingerbread House

Creative's profile



unlime PRO
Designer

Creative's top 5 skills

Graphic Design, Illustration, Product Design, Packaging Design