

1/2 Miele Wasserlos - First washing machine with CO2 for home use

Imagine a stain-fighting appliance that uses no water and no soap.

Miele CO₂ tanks for Miele Wasserlos

Miele

Idea:
Using CO₂ for unlimited washes

Laundry Experience:
The need for permanent CO₂ can be an impediment for domestic use of these washing machines.

Solution:
We propose a system for filtering and purifying liquid CO₂, which is under pressure, and then stored back in the Miele CO₂ tank and ready to be used in another washing cycle. Being able to use CO₂ for an unlimited period and for countless washing cycles, we are turning a method of washing already economic in a very economical one.

Process Step:
Sort Laundry
Pre-treat Laundry
Select Wash-Program
Choose and dose Detergent
Wash
Dry

Solution

What is CO₂ Cleaning? CO₂ dry cleaning uses liquid CO₂, the same ingredient that makes sparkling water "fizzy".

How does CO₂ dry cleaning work? CO₂ dry cleaning uses natural liquid carbon dioxide (recycled from industry wherever possible) combined with recyclable cleaning agents to wash the dirt, particulate and toxins from garments, then flushes and "dries" using CO₂'s state changing cycles from a gas to a liquid and then back to a gas.

CO₂ cleaning is better for your clothes! Our CO₂ dry cleaning technology gets clothes cleaner than any other dry cleaning method. With CO₂, there's no fading, shrinking, pilling or stain setting. The entire cleaning process is done at a cool, room temperature. And there's never a "dry cleaning" smell or residue left

on your clothes.

Garments cleaned with CO₂ feel

2/2

Miele Wasserlos - First washing machine with CO2 for home use

Imagine a stain-fighting appliance that uses no water and no soap.

Creative's profile



Claudiu Grigore Copocian

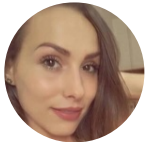
Civil engineer

Resita, Romania

Creative's top 5 skills

Architecture, Graphic Design, Product Design, Interior Design, Packaging Design

Collaborators



Loredana Dediu

Resita, Romania