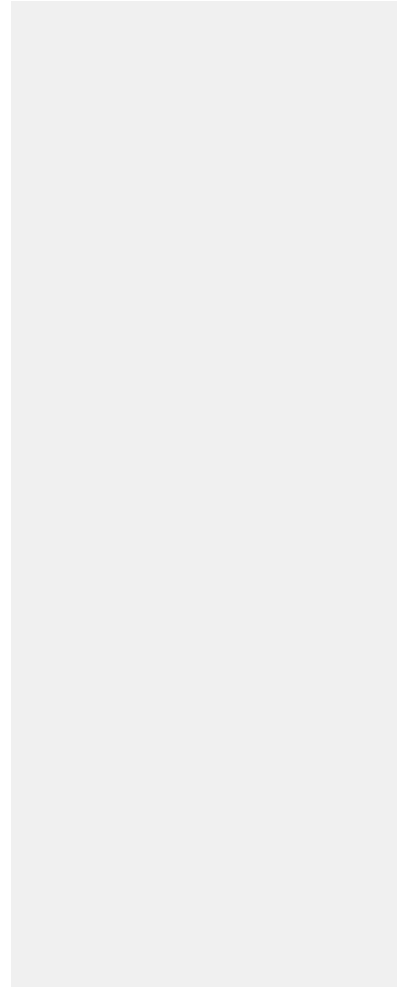
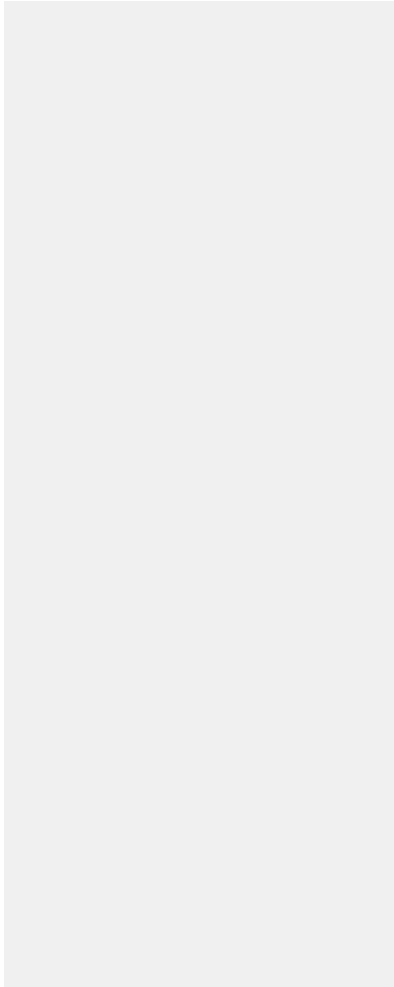


1/5 **cotton candy**

do you like candy?

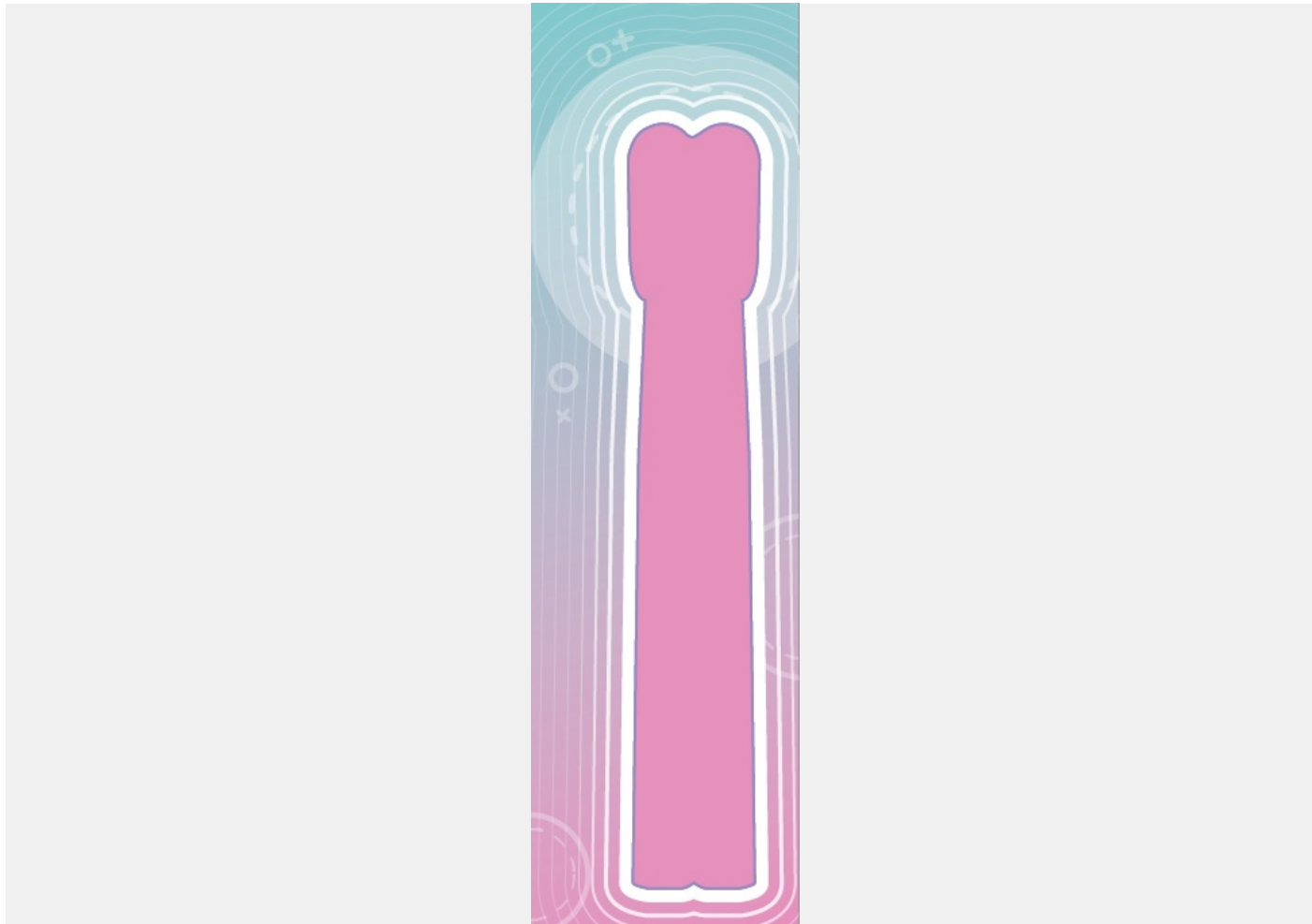


Solution

I chose this design because after eating candy we always need to brush our teeth.

2/5 **cotton candy**

do you like candy?



Your design here

I chose this design because cotton candy represents the sweetness of living!

3/5 **cotton candy**

do you like candy?

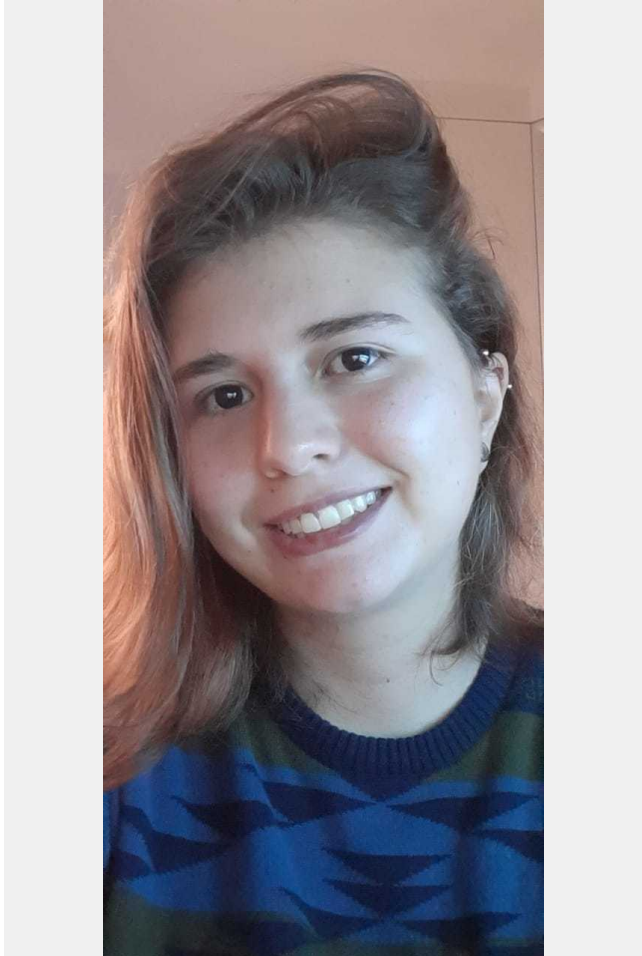


Your design applied to the toothbrush & bristles

The colours represented are created using pastel colours, which on their own represents something sweet. The colours used such as pink and blue resemble 2 of the most famous cotton candy colours.

4/5 **cotton candy**

do you like candy?



Please tell us about your design, and about you!

Heyy! My name is Maria, I'm 22 years old, and I'm a UI/UX and brand designer. I work remotely developing visual identities, campaigns and interfaces for web and mobile and design to graphic. <https://br.linkedin.com/public-profile/in/mariaromanodesigner>

5/5

cotton candy

do you like candy?

Creative's profile



Maria Thereza Romano Alves

Digital Designer

São Paulo, Brazil