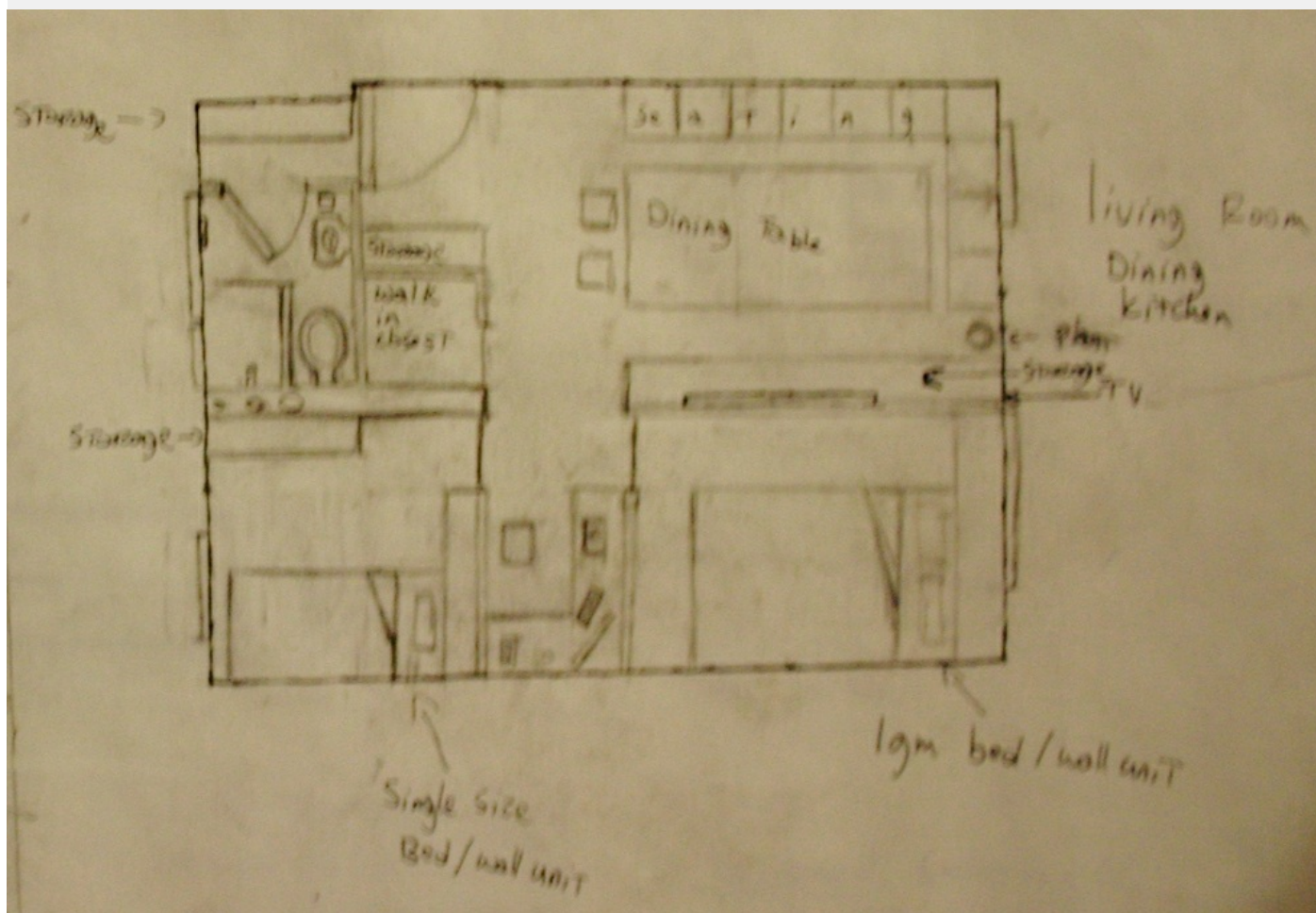


1/2 **square**

the square a simple design by Calgar C that effectively hides the kitchen

**Solution**

the design for this space is based around 4 sections. there is a main hallway going down the center and each corner has its section. the end of the hallway leads to the office

the idea behind this design was to hide the kitchen. the first thing i thought of was where the bathroom was to go. i decided to put the dining room over in the corner. the way it works is a large rectangular table which is the kitchen/storage is there for cooking and a table drops from the ceiling ontop hiding the kitchen and revealing the dining table. there are seats for 10 around the walls and anotehr 2 seats the hide under the table. you can fit even more then 12if you get spare chairs. now next to the dining table along the wall is a stoorage most likely to be used for cookware. there is a tv mounted on the wall where telepresence can be setup. i only put 1 plant for now but there still is space to fit a few more. in the other corner across from the dining room is the master bedroom. there is a

2/2

square

the square a simple design by Calgar C that effectively hides the kitchen

Creative's profile



calgar
Dj, Producer, Artist