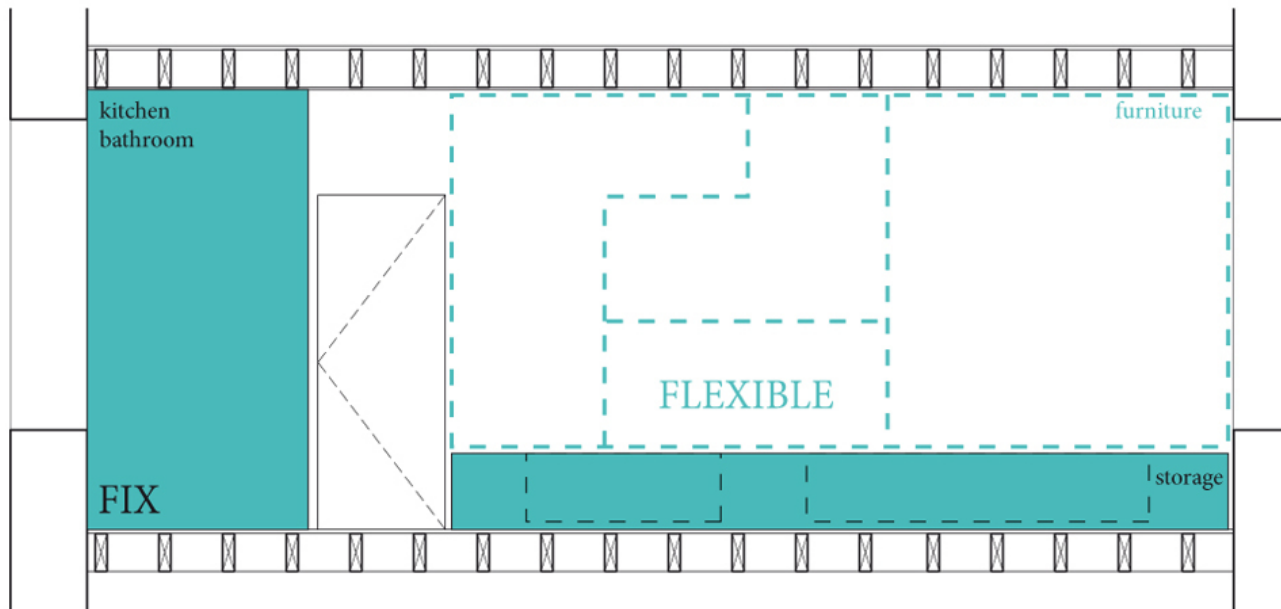


1/2 **TETRIS WALL**

...to be continued

**Solution**

The main concept of this project is to offer a maximum of freedom in living by creating a maximum of free and flexible space.

The design consists therefore of three main elements which will provide all the necessary essentials of an contemporary apartment:

1. Closed kitchen and bathroom.

This space is the only single use area of this project because it contains all the elements of an apartment which need to be connected to the existing pipework for gas and water. Therefore it is reduced to a minimum of space.

1. Fix but transformable floor.

The rest and the biggest part of the apartment is completely transformable in order to have

2/2

TETRIS WALL

...to be continued

Creative's profile

enno

benno